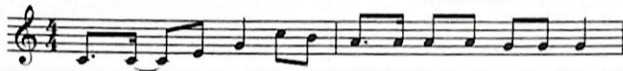


# Sansa Kroma

$\text{♩} = 120$

Ghana



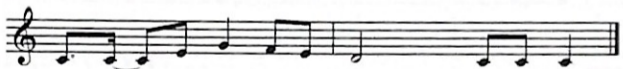
Sahn, sah— kroh - mah nee-nay woo ah-chay, chay koh-koh-mah.



Sahn, sah— kroh - mah nee - nay woo ah-chay, chay koh-koh-mah.



Sahn, sah— kroh - mah nee - nay woo koh - koh - mah.



Sahn, sah— kroh - mah nee - nay woo koh - koh - mah.